



**JOURNEY OF
JHARKHAND TRIBAL
EMPOWERMENT
& LIVELIHOODS
PROJECT (JTLP)**

VOLUME : 02



JHARKHAND TRIBAL DEVELOPMENT SOCIETY

Scheduled Tribe, Scheduled Caste, Minority and Backward Class Welfare Department, Government of Jharkhand





Journey of Jharkhand
Tribal Empowerment
& Livelihoods Project
(JTELP)



Contents



Message from Hon'ble Chief Minister	01
Message from Minister, Scheduled Tribes, Scheduled Caste & Backward Class Welfare (excluding Minority), Transport Department	02
Message from State Project Director	03
Introduction	05
Project Profile	08
Implementation Structure of JTELP	09
Project Area	10
Project Components	12
Community Based Organizations	13
Promotion of Self Help Group (SHG)	14
• Community Empowerment	15
• Details of Savings and Inter-loaning at SHG Level as on 31st December, 2019	16
Promotion of Youth Group	18
• Details of Savings and Inter-loaning at YG Level as on 31st December 2019	20
Gram Sabha Project Execution Committee (GSPEC)	22
Integrated Natural Resource Management (INRM)	24
Barbatti Cultivation	26
Farmer Service Centre	28
Land and water resources development	32
Livelihood Support – livestock intensification	34
Horticulture	38
• Mango Orchard	39
• Papaya Production	40
Biogas and Cookstove	42
Fish farming	44



Message



Jharkhand state, carved out of erstwhile Bihar with a historical struggle, is a land of opportunities. The state has a large tribal population primarily dependent upon traditional agriculture and forest resources. Jharkhand Tribal Development Society (JTDS) has been very successful in ensuring household food security, improving livelihood opportunities and overall quality of life of the tribal population in Jharkhand.

Jharkhand Tribal Empowerment and Livelihoods Project (JTELP), supported by IFAD, is being implemented by Jharkhand Tribal Development Society (JTDS) under Department of Welfare (ST, SC, Minority and BC Welfare Department). Efforts have been made to cover a sizeable section of tribal people in 14 TSP districts covering 32 blocks, 1779 villages having 2.11 lakhs households. The efforts in the field of agriculture and allied activities has helped in increasing the production and income of the beneficiaries based on sustainable and equitable use of natural resources.

“Journey of JTELP Vol-2” is a “continued story of change”, a story reflected in the greenery of land and smiles on faces of beneficiaries.

I wish the team of JTDS all success in the implementation of JTELP.

Hemant Soren
Chief Minister,
Government of Jharkhand

संदेश



खनिज एवं प्राकृतिक संसाधनों से भरपूर झारखण्ड राज्य एक सशक्त आंदोलन से उपजा हुआ नवोदित प्रदेश है। अन्य लोगों के अलावे इस प्रदेश में करीब 17 जनजातियाँ एवं 09 आदिम जनजातियाँ निवास करती हैं, जिनकी आबादी कुल जनसंख्या का 27% के करीब है। इन जनजाति समूहों का मुख्य पेशा कृषि है।

पारम्परिक एवं पुरानी पद्धति से कृषि, पशुपालन एवं अन्य आर्थिक गतिविधियों का आयोजन इनके द्वारा किया जाता है। झारखण्ड आदिवासी सशक्तिकरण एवं आजीविका परियोजना (JTELP), अन्तर्राष्ट्रीय कृषि विकास कोष (IFAD), भारत सरकार एवं झारखण्ड सरकार के संयुक्त प्रयास से 2013 में ही प्रारंभ की गई एक परियोजना है जिसका मुख्य उद्देश्य झारखण्ड के 14 जिलों में फैले हुए लक्षित आदिवासी परिवारों को कृषि, पशुपालन एवं अन्य आर्थिक गतिविधियों में सहयोग प्रदान कर उन्हें सशक्त एवं आत्मनिर्भर बनाना है। “JTELP की यात्रा भाग-II” के माध्यम से परियोजना के द्वारा किये गये प्रयासों को दर्शाया गया है।

मैं उम्मीद करता हूँ कि इससे संबद्ध सभी ग्राम-सभा परियोजना क्रियान्वयन समिति (GSPEC), जिला स्तरीय पदाधिकारीगण एवं उनसे संबंधित सभी स्वयंसेवी संस्थागण इस परियोजना के उद्देश्यों को सफल बनाने में सफल साबित होंगे।

चंपई सोरेन

मंत्री, अनुसूचित जनजाति, अनुसूचित जाति एवं
पिछड़ा वर्ग कल्याण (अल्पसंख्यक कल्याण छोड़कर), परिवहन विभाग
झारखण्ड सरकार

Message



Jharkhand Tribal Empowerment & Livelihood Project (JTELP), supported by International Fund for Agricultural Development (IFAD), is being implemented by Jharkhand Tribal Development Society (JTDS) under Department of Welfare (Scheduled Tribe, Scheduled Caste, Minority and Backward Class), Government of Jharkhand. Jharkhand, being the state of natural beauty, rich in natural resources and varied cultural practices has been into a developing phase since its formation in 2000. According to 2001 census, the Scheduled Tribe (ST) population of Jharkhand state is 7,087,068 constituting 26.3 per cent of the total population (26,945,829) of the state, with main concentrations in 14 districts also known as TSP districts. Around 91.7% Scheduled Tribes are primarily rural and reside in villages. The outreach to these tribes in the interior of the villages is of major concern of the Govt. of Jharkhand.

For bringing an overall development of tribal people this project focuses on 14 TSP districts covering 32 blocks and 1779 villages. To ameliorate the condition of tribal people the project mainly focuses on its four components:-

- 1) Community Empowerment
- 2) Integrated Natural Resource Management
- 3) Livelihood Support
- 4) Project Management

The initiative taken is to provide a better result and outcome benefiting 2,11,053 households. The area of intervention is increasing as per the acceptance of the community towards a social change. Inspite of upcoming challenges the project could reach targeted people and showed changes in the life.

“Journey of JTELP Vol-2” is a continued story of changes which was started in 2013 in order to empower and improve the life of the vulnerable tribals. The scope of work is much due to acceptance of people at community level and thus carving ways in the path of self sustainability, self reliability, motivation, empowerment, development and accessibility. This short journey presented in the form of book would give an overall understanding of the changes actually achieved.

I hope that the achievements so far with day by day increase will help rural folk for betterment with more innovations and dedications by team JTELP.

A handwritten signature in black ink, appearing to read 'B. Kumar', written over a horizontal line.

Bhishma Kumar
State Project Director,
Jharkhand Tribal Development Society



Introduction

Rural India has been facing the daunting challenge of poverty, estimated at 41.8% (2011). The incidence of poverty is highest among the Scheduled Tribes (STs) in the Central and East Indian plateau, including Jharkhand. Further, poverty is inherently linked to socio-economic vulnerabilities rendering the poor without rights and voice. Integrated and sustainable livelihood interventions focusing on local challenges are envisaged as one of the effective ways for poverty alleviation.

Jharkhand has an area of 79,714 Km² and a population of 32.97 million (Census 2011), of whom 26% are STs and 78% rural. With 51.6% rural people below the poverty line (BPL), Jharkhand is among the five States in India with more than half the rural population BPL. Though agriculture is the main rural occupation, over half of the cultivable land remains fallow and only 11% of the area sown is irrigated. Historically a key livelihood source for the Tribal communities, forests comprises 30% of the State's geographical area.

Low agriculture productivity, subsistence nature of the farm economy, degradation of forests and absence of non-farm livelihoods are the key drivers

of poverty. In spite of a sub-humid climate and high rainfall, agriculture is fraught with high risks due to high variability of monsoon rains and increasing temperature due to climate change, low moisture holding capacity of soils, absence of exploitable aquifers and high run-off.

Government of Jharkhand has adopted an holistic approach for poverty alleviation and community empowerment with special focus on tribal communities. Jharkhand Tribal Development Society (JTDS) has adopted the "community demand driven" approach, since the community's response is encouraging when interventions are relevant to their needs.

JTDS is implementing Jharkhand Tribal Empowerment and Livelihoods Project (JTJELP) supported by International Fund for Agricultural Development (IFAD) since 2013. Besides strengthening community-based institutions and improving natural resource management, the Project emphasizes productivity enhancement and upscaling of proven, market-oriented production activities. JTJELP is also foster convergence with the on-going Tribal and rural development programmes of the Government of India.





Rationale

Natural resources are central to the livelihood systems and coping strategies of the STs. Loss of soil fertility due to erosion and degradation, denudation of and increasing state control over forests have adversely affected tribal livelihoods and wellbeing over the years. In their relatively recent transition to settled farming and tribal communities are yet to develop resource management systems suited to their farming systems in an ecologically complex resource base. Above all, they lack financial resources and have little access to technical services. It was on this premise and context that the JTELP was designed.

Goal & Objective of JTELP

The overarching goal of JTELP is to improve the living conditions of tribal people in general and Particularly Vulnerable Tribal Groups (PVTGs) in particular. This is sought to be achieved by organising and enabling the communities to adopt sustainable and productive natural resource management regimes, adopt market-oriented production systems and learn the skills and gain the experience of planning and implementing development plans relevant to their villages.

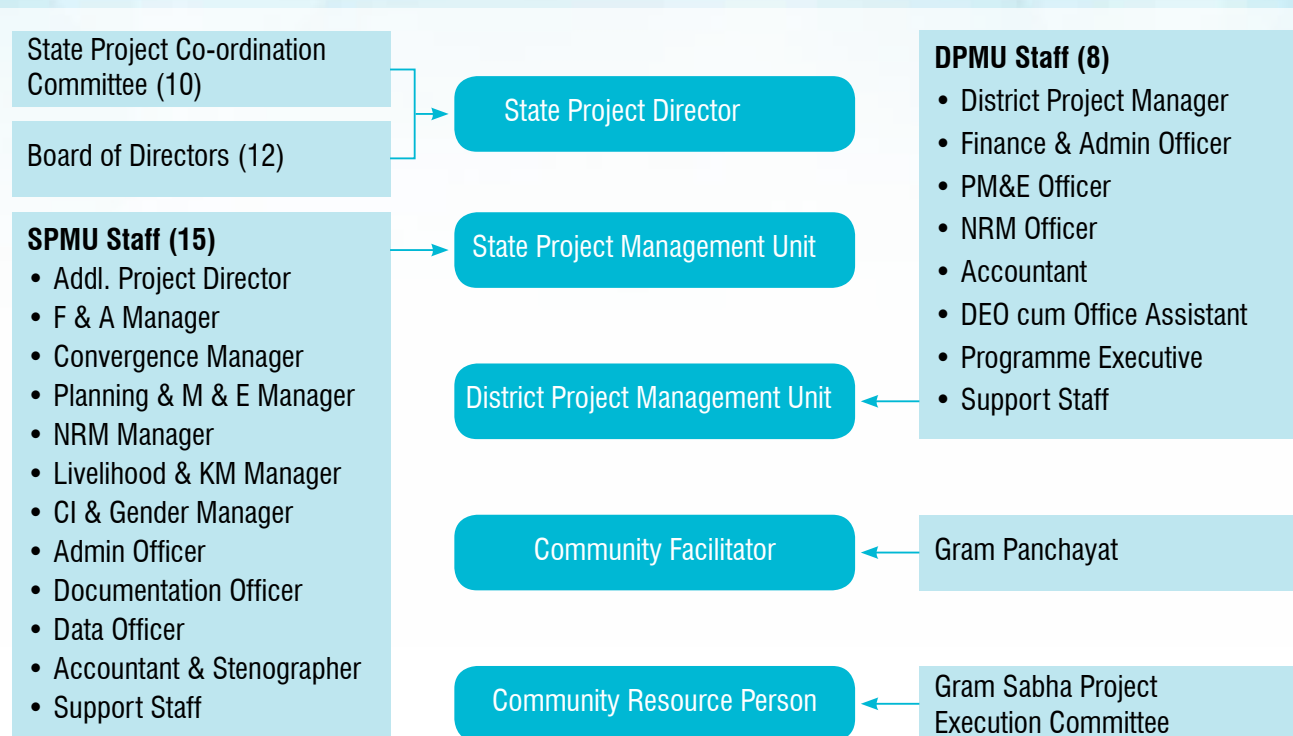
JTELP will seek to foster strong community-based institutions that empower local communities, especially women, introduce productive and sustainable systems of natural resource management and enhance food and nutrition security and cash incomes, respectively, by introducing more productive farming technologies and promoting locally proven production technologies. Taken as a set of interventions the proposed activities begin to build community and ecological resilience to climate change. Several of them were explicitly designed as adaptation responses to climate change.



Project Profile

Country	INDIA
Project Title	Jharkhand Tribal Empowerment and Livelihoods Project (JTELP)
Project Number	879-IN
Total project budget (in INR)	Rs. 635 crore
Project duration	8 years (2013-2021)
Funding agency	International Fund for Agricultural Development (IFAD) (44.1%), SCA to TSP (12.74%), MGNREGS (38.2%), Govt of Jharkhand (4.15%), Beneficiaries (0.8%)
Sponsoring Agency	<ul style="list-style-type: none"> • Central – Ministry of Finance, Dept. of Economic Affairs, Govt. of India. • State – Department of Welfare, Govt. of Jharkhand.
FNGOs engaged	20
No. of District Covered	14 TSP Districts
No. of Blocks	32
No. of Villages Covered	1779
No. of House Hold	2,11,055
No. of Particularly Vulnerable Tribal Group (PVTG) Dominated Villages Covered (more than 70% PVTG population)	232
No. of Particularly Vulnerable Tribal Group (PVTG) House Hold	8819

Implementation Structure of JTELP



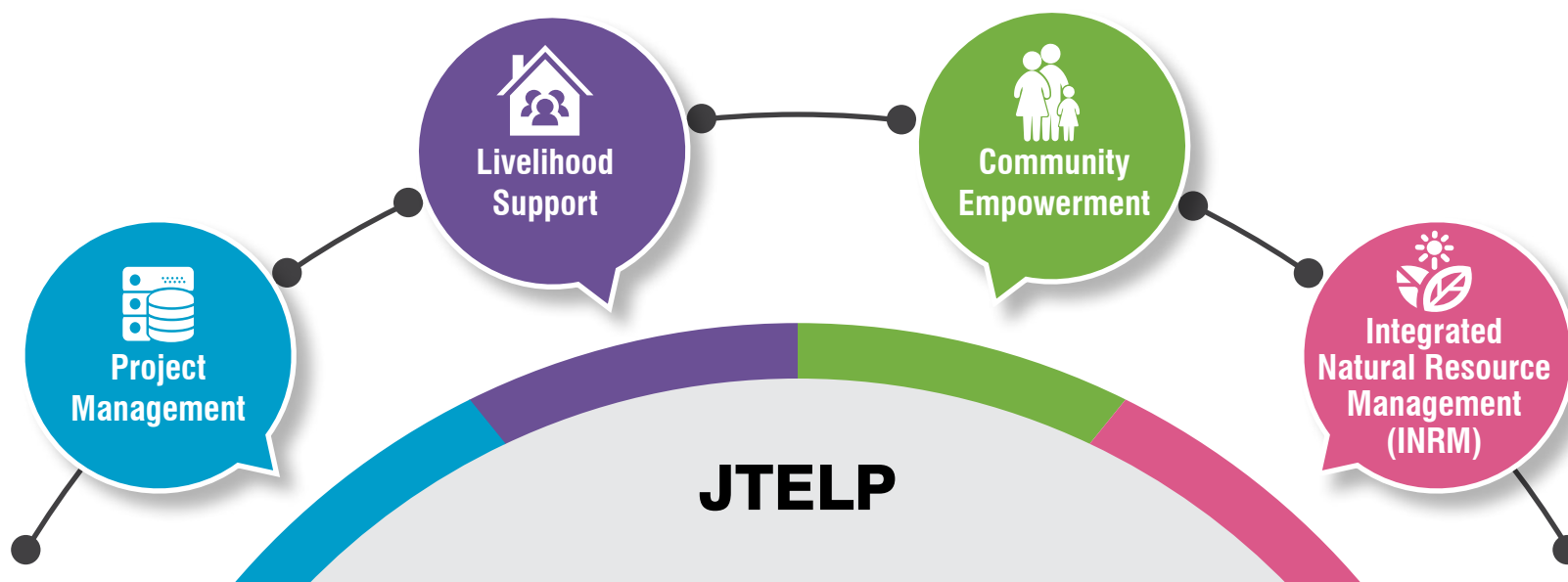
Project Area



Sl. No.	District	Block	Total Number of Gram Panchayats	Total Number of Project Villages	Total number of Particularly Vulnerable Tribal Group (PVTG) Villages Covered	Total Number of households covered under JTELP	Total Number of Particularly Vulnerable Tribal Group (PVTG) Households Covered under JTELP
1	Ranchi	Bundu	7	61	0	8714	0
		Tamar	7	52	0	8958	0
		Angara	7	35	0	8052	0
2	Khunti	Karra	5	43	0	5383	0
		Erki	9	72	0	9467	0
3	Simdega	Simdega Sadar	4	21	1	5167	4
		Kurdeg	6	18	3	7508	51
4	Gumla	Sisai	5	29	0	5810	0
		Bharno	4	27	0	5504	0
5	Lohardaga	Kairo	5	24	0	6037	0
		Bhandra	5	26	0	6183	0
6	Latehar	Manika	5	27	2	5585	31
		Barwadih	5	23	10	6121	482
7	West Singhbhum	Khutpani	6	56	0	6654	0
		Tonto	4	27	0	5481	0
		Sonua	4	34	0	5919	0
		Goilkera	3	32	0	5020	0
8	East Singhbhum	Dumaria	6	55	12	6528	159
		Potka	10	107	12	10728	142
9	Seraikela Kharsawan	Rajnagar	7	84	0	7965	0
		Kuchai	3	32	0	4821	0
		Seraikela	5	66	0	5595	0
10	Jamtara	Jamtara Sadar	5	35	2	5425	20
		Fatehpur	5	59	11	6325	177
11	Dumka	Masalia	5	60	0	6347	0
		Gopikandar	6	102	8	7891	465
12	Godda	Sunderpahadi	5	73	33	5663	1365
		Boarijore	5	117	24	6943	1236
13	Pakur	Littipara	4	124	66	5414	2062
		Amrapara	4	65	22	5732	1614
14	Sahebganj	Taljhari	5	93	19	6635	679
		Borio	5	100	7	7480	332
Total		32	171	1779	232	2,11,055	8819

Project Components

Components	Sub Components
Community Empowerment	<ul style="list-style-type: none"> o Promotion of Gram Sabha Project Execution Committee (GSPEC) o Promotion of Self Help Groups (SHGs) o Promotion of Youth Groups o Capacity Building o Special support to Particularly Vulnerable Tribal Group (PVTG) Households
Integrated Natural Resource Management	<ul style="list-style-type: none"> o Community Mobilization o Land & Water Resource Development o Productivity Enhancement & Crop Diversification
Livelihoods Support	<ul style="list-style-type: none"> o Income Generation Activities o Introduce Market Oriented Production Activities o Vocational Training o Innovation



Communtiy Based Organizations

Community-based Organizations (CBOs) are emerging as key players in the course of development process. Community based organizations gives a direct link up with the community and helps to sustain a platform for present and future upliftment of the community. Basically they help at local level to improve life for residents. The focus is to build equality across society in varied streams of development as it needs to be reached to all. The role of CBO's is becoming knowledge management - to compile, sort, store and retrieve local data. Work conducted by CBO's generally falls into the themes of human services, natural environment conservation or restoration and making a participatory platform for the varied communities.

Under first component of JTELP for Community empowerment Promotion of Self Help Groups, Youth Groups and Gram Sabha Project Execution Committee are been formed. These groups are the mode to connect with the





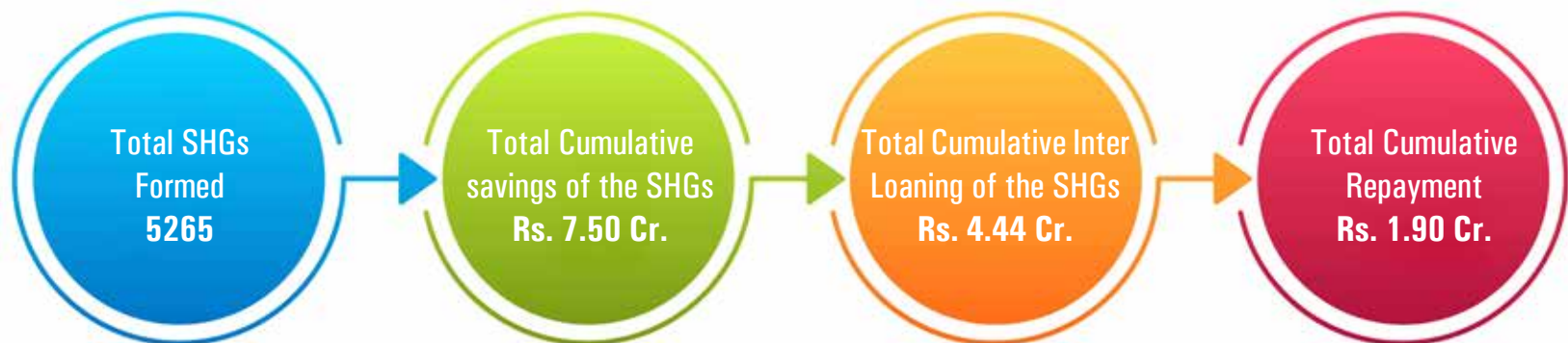
**PROMOTION OF
SELF HELP GROUP
(SHG)**

Sl No.	District	SHG's Formed	SHG A/C Opened
1	Lohardaga	334	334
2	Gumla	555	555
3	Simdega	445	445
4	Latehar	312	312
5	Dumka	435	435
6	Jamtara	274	274
7	Pakur	342	333
8	Godda	425	425
9	Sahibganj	435	435
10	Ranchi	260	260
11	Khunti	390	390
12	E.Singhbhum	383	383
13	W.Singhbhum	275	275
14	Saraikeela kharsawan	400	400
Total		5265	5256



Total Seed capital released to SHGs Rs.5.50Cr (As on 31st December, 2019)

Community Empowerment



Details of Savings and Inter-loaning at SHG Level as on 31st December, 2019

Sl. No.	District	Total SHGs Formed	Cumulative Saving	Cumulative Interloaning	Cumulative Loan Repayment	Saving/SHG	Inter loan/SHG
1	Lohardaga	334	5,961,968	4,874,543	1,826,995	17,850	14,594
2	Gumla	555	13,041,413	7,675,653	2,537,676	23,498	13,830
3	Simdega	445	4,300,166	2,331,132	98,603	9,663	5,238
4	Latehar	312	6,236,765	4,909,316	1,876,120	19,990	15,735
5	Dumka	435	4,601,175	3,191,240	1,244,340	10,577	7,336
6	Jamtara	274	2,181,828	824,546	507,525	7,963	3,009
7	Pakur	342	2,534,854	492,680	152,694	7,412	1,441
8	Godda	425	2,166,594	1,203,840	723,620	5,098	2,833
9	Sahibganj	435	5,190,129	1,381,875	584,752	19,962	148
10	Ranchi	260	4,607,102	1,423,180	256,750	11,813	3,649
11	Khunti	390	5,529,997	1,944,885	1,195,815	14,179	4,987
12	E.Singhbhum	383	5,806,776	4,474,817	2,578,461	15,161	11,684
13	W.Singhbhum	275	4,304,802	2,211,635	1,468,785	15,654	8,042
14	Saraikela kharsawan	400	8,573,341	7,490,480	3,973,783	21,433	18,726
Total		5265	75,036,910	44,429,822	19,025,919	14,252	8,439





PROMOTION OF YOUTH GROUP

Total Member 12263



Female
77%



Male
23%



Sl No.	District	Number of Youth Group Formed	YG A/C Opened
1	Lohardaga	45	45
2	Gumla	46	46
3	Simdega	66	66
4	Latehar	40	40
5	Dumka	52	51
6	Jamtara	47	46
7	Pakur	45	28
8	Godda	45	42
9	Sahibganj	55	40
10	Ranchi	70	70
11	Khunti	45	45
12	E.Singhbhum	82	82
13	W.Singhbhum	90	84
14	Saraikeela kharsawan	65	65
Total		793	750



Total Seed capital released to YGs Rs.2.81 Cr (As on 31st December, 2019)



Details of Savings and Inter-loaning at YG Level as on 31st December 2019

Sl. No.	District	Total YGs Formed	Cumulative Saving	Cumulative Interloaning	Cumulative Loan Repayment	Saving/YG	Inter loan/YG
1	Lohardaga	45	393,402	5,615	5,030	8,742	125
2	Gumla	46	114,113	64,200	0	2,481	1,396
3	Simdega	66	144,630	104,650	13,200	2,191	1,586
4	Latehar	40	357,246	252,346	0	8,931	6,309
5	Dumka	52	325,150	198,580	89,660	6,253	3,819
6	Jamtara	47	49,156	8,700	2,200	1,046	185
7	Pakur	45	76,800	18,655	7,080	1,707	415
8	Godda	45	135,280	95,550	24,570	3,006	2,123
9	Sahibganj	55	183,392	327,000	56,920	2,620	4,671
10	Ranchi	70	1,253,266	47,631	6,690	27,850	1,058
11	Khunti	45	1,766,297	124,845	57,730	39,251	2,774
12	E.Singhbhum	82	246,755	104,790	73,230	3,009	1,278
13	W.Singhbhum	90	255,740	16,100	13,620	2,842	179
14	Saraikela kharsawan	65	375,570	285,720	81,150	5,778	4,396
Total		793	5,676,797	1,654,382	431,080	7,159	2,086





**GRAM SABHA
PROJECT
EXECUTION
COMMITTEE
(GSPEC)**





Description	Target	Completed	Under Process
Formed	1734	1725	9
A/c Opened	1725	1692	33
VDF Provided	1476	1254	222
Total VDF released to the GSPEC Rs. 17.90 Cr. as on 31st December, 2019			
Total members	19867	Male- 55%	Female-45%





**INTEGRATED
NATURAL
RESOURCE
MANAGEMENT
(INRM)**



Kharif Intervention 2018-19

Sl.No.	Particulars	
1	No. of farmers	20000
2	Total Area (acre)	10476
3	Av. Productivity (Qt.)	18.61
4	Total Production (Qt.)	1.95 lakhs
5	Total value (INR)	30.21 Cr

Rabi Intervention 2018-19

Sl.No.	Particulars	
1	14 districts, 84 villages.	
2	16,592 beneficiaries, 4676 acres.	
3	2907 acres of upland (first time cultivation)	
4	10 different types of crops selected.	
5	None of the intervention failed.	



Kharif Intervention 2019-20

Coverage	Number of Farmers	Achievement
616 Villages	47321	68100 Acres

Rabi Intervention 2019-20

Coverage	Number of Households	Achievement
980 villages	87158	1,10,151 Acres



Planning for Zyed and Kharif 2020-2021

Existing coverage in agriculture (HH)	Additional HH (This Zaid)	Total HH coverage under productivity enhancement
105,000	177,000	282,000





**BARBATTI
CULTIVATION**





Sl. No.	District	No. of Farmers	Amt. Released (Rs.)	Seeds Arranged for farmers (No)	Bush Cutting completed for farmers (No)	Seeds sown for farmers (No)
1	Godda	2184	11920000	2184	2184	2184
2	Sahebganj	2000	10622000	2000	2000	2000
3	Dumka	700	2964000	700	700	700
4	Pakur	3100	10494000	3100	3100	3100
Total		7984	36000000	7984	7984	7984





Objectives of FSC

- FSC's plays a pivotal role in providing security and storage of seeds, harvested barbatti, production grains along with other agricultural seeds.
- FSC's makes easy accessible of farming equipments for the villagers.
- FSC'S provide various farming equipments for agriculture which makes agriculture process much easier and convenient.

FARMER SERVICE CENTRE



Farmer Service Centre (FSC)

Sr.No.	District	Block	Gram Panchayat	Location of FSC: Village Name	Number of Villages in the Gram Panchayat	Total Number of Households	
1	Khunti	Karra	Jurdaag	Padgaon	8	1032	
			Arki	Todang	Gitilbera	10	1137
				Tintilla	Dolda	12	923
2	Seraikela	Seraikella	Chotadawna	Sinisidma	13	122	
			Pandra	Patahesal	14	184	
			Murkum	Barabana	14	109	
		Rajnagar	Potka	Barhi	12	32	
			Katanga	Suriaposi	12	72	
		Kuchai	Arwan	Bayang	10	75	
			Chotasegoi	Chotasegoi	13	235	
3	Gumla	Sisai	Nager	Gokhulpur	4	1354	
			Kudra	Jaira	6	1146	
		Bharno	Dumbo	Dumbo	5	1334	
			Karandajor	Konjali	8	1495	
4	West Singhbhum	Tonto	Nimdih	Sankuchiya	8	137	
		Sonua	Dewanbir	Berasai	6	67	
			Porahaat	Sarandiyapose	8	122	
		Khuntpani	Baralagiya	Telaisud	7	106	
5	Dumka	Gopikander	Gopikander	Chataarchuwa	23	867	
			Tainjor	Roldih	18	1227	
			Musna	Pindergaria	22	506	
		Masaliya	Haroraidih	Palasi	11	1422	
			Kolarkonda	Kolarkonda	19	964	
			Kolarkonda	Taldangal	19	964	
			Golbandha	Golbandha	11	1439	
6	Godda	Sundarpahari	Tilabad	Tilabad	12	221	
			Bara Sindri	Bara Sindri		16	182
				Tilaipara			56
				Ratnapara			27
				Kote			52
			Chandna	Chandna	15	187	
			Boarijor	Kusumghati	Dahua	8	115
		Devipur		Tamliandanda	19	43	
		Dumariya		Lohatamba	16	130	
		Bara Amarpur		Chetna Pahar	16	14	
		Lilatari-1	Jolopahar	15	45		

Sr.No.	District	Block	Gram Panchayat	Location of FSC: Village Name	Number of Villages in the Gram Panchayat	Total Number of Households
7	Jamtara	Fatehpur	Asanberiya	Asanberiya	16	1319
			Banarnacha	Telyabandhi	14	1310
		Jamtara	Chandrathipa	Nildaha	4	292
			Ladhna	Nitaydih	8	110
8	Latehar	Manika	Jungur	Jungur	2	738
			Matlong	Matlong	3	692
			Dundu	Bichlidag	3	663
		Barwadih	Mangra	Mangra	6	2484
			Chipadohar	Chipadohar	3	2199
9	Lohardaga	Kairo	Sarabhe	Eradon	5	970
			Guri	Baghi	4	1036
			Narauli	Nagjua	5	1362
		Bhandra	Bhitta	Kachmachi	6	1077
10	Pakur	Amrapara	Jaraki	Fatehpur	15	2133
			Dumarchir	Kundamatia	18	1708
			Pachuwara	Tutrapahar	7	1608
			Singarsi	Margama	23	1434
			Singarsi	Sajnipara	23	1434
		Littipara	Kunjbona	Bada ghaghri	40	1497
			Karmatand	Kairabani	34	1220
			Jordiha	Haripur	22	1460
			Jordiha	Bada chatkam	22	1460
			Jordiha	Pakadiya	22	1460
			Kunjbona	Dandakuria	40	1497
Kunjbona	Lilatari	40	1497			

Sr.No.	District	Block	Gram Panchayat	Location of FSC: Village Name	Number of Villages in the Gram Panchayat	Total Number of Households
11	Ranchi	Bundu	Baruhatu	Reda	3	504
			Kanchi	Burudih	8	580
		Tamar	Kudda	Arahanga	6	1175
			Kundla	Kuchru	5	695
12	Simdega	Simdega	Sewai	Sewai	2	943
			Pithra	Pithra	8	723
		Kurdeg	Barkibura	Barkibura	2	1108
13	East Singhbhum	Potka	Rasunchopa	Raharjudi	10	1144
			Kowali	Kashidih	10	1409
			Tangrain	Chhota Hariyan	11	1257
		Dumaria	Kantashol	Harda	14	1386
			Plashbani	Kalimati	9	1217
14	Sahibganj	Talhari	Bhatbhanga Santhali	Bhatbhanga Santhali	13	1112
			Simuljori	Simuljori	14	1341
			Badadurgapur	DangatokPhar	26	1293
			Talhari	Boga pahar	23	1405
			Vrindavan	BhursiPahar	11	1327

Equipments Provided to FSC

Dry Land weeder, Paddy Thresher, Cono weeder , Seed Treatment Drum , SRI Line Marker , Maize Sheller ,
Kitchen Garden Tools , Wheel Hoe, Shed Net , Water Pumpset, Krishi SWI weeder,



**LAND AND
WATER
RESOURCES
DEVELOPMENT**



Interventions	Target	Achievement	Command Area (Acre)
Shallow Well	991	711	350 Acre
Farm Pond	1780	1567	2340 Acre (closed)
Irrigation Well	564	164	410 Acre
Gravity Based irrigation system	1	1	30 acres
Development of irrigation system	17	0	350 acres (Target)



**LIVELIHOOD
SUPPORT -
LIVESTOCK
INTENSIFICATION**





Livestock:

- Till date 10,700 families benefitted with this programme.
- Target: Focus on involving 15,000 families with this programme in coming phase.

Activity	Target	No of Shed Constructed	No of Shed populated	% of Shed populated	Income Earned (In Lakhs)
Poultry	3300	3179	2874	90	91.28
Goat	2500	2496	2218	89	19.81
Pig	1400	1387	912	66	38.17
Total	7200	7062	6004	85	149.26

Breeding Centre (Goat & Pig)

Target of no.of sheds	14	18
Achievement	14	18



Pashu Sakhi/ Pashu Mitra

JTELP is implementing various income generating activities by promoting goatry, piggery and poultry farms on individual cluster approach and group activities. For this very reason various active villagers and experienced persons were selected on the basis of veterinary services, as well as business management for providing services, inputs, products and technologies to the project community who are called as Pashu-Mitras/ Pashu-Sakhies. These Pashu-Mitra support community members in improving their animal management skills . Role of Pashu mitra/ Pashu Sakhi being providing adequate medical support and help to the livestock (Goatry, Pggery, Poultry) taken by the beneficiaries.





Horticulture

Horticulture has been promoted in 110 acres across 8 districts.
Total of 106 beneficiaries benefited under this intervention.





**MANGO
ORCHARD**



**PAPAYA
PRODUCTION**

Phase	Area (acres)	No. of Benf.	No. of plants	Total Production (MT)	Total Income (INR)
First	5	8	4790	3.8 (1st harvest, 2nd harvest yet to start)	57000
Second	42	113	42000	6.4 (from 10908 plants in three district)	154368





**BIOGAS AND
COOKSTOVE**





Sl. No.	District	Bio-Gas (unit)
1	Lohardaga	1
2	Gumla	2
3	Simdega	2
4	Latehar	2
5	Dumka	1
6	Jamtara	2
7	Pakur	1
8	Godda	1
9	Sahibganj	1
10	Ranchi	2
11	Khunti	1
12	E.Singhbhum	1
13	W.Singhbhum	1
14	Saraikele kharsawan	2
Total		20

Given in 4 districts of Santhal Pargana

Sl. No.	District	Cook Stove (HH)
1	Dumka	100
2	Pakur	400
3	Godda	300
4	Sahibganj	200
Total		1000

Sl. No.	District	Cook Stove (HH)
1	Dumka	200
2	Pakur	2500
3	Godda	1600
4	Sahibganj	700
Total		5000





FISH FARMING

	No. of Beneficiary	No. of Villages	Total Production	Total Revenue from sale	Total Expenditure	Net Profit/ Loss
2018-19 (individual activity)	4209	1317	250 MT	Rs. 2.06 Cr.	Rs. 0.16 Cr.	Rs. 1.90 Cr.





Concept, Design & Photography by GR8DESIGNS



JHARKHAND TRIBAL DEVELOPMENT SOCIETY

**Scheduled Tribe, Scheduled Caste, Minority and
Backward Class Welfare Department, Government of Jharkhand**

Dr. Ramdayal Munda Tribal Welfare Research Institute Campus,
Tagore Hill Road, Morabadi, Ranchi-834008
Website: www.jtdsjharkhand.org | E-mail: spd.jtds@gmail.com | Phone/Fax: 0651-2552088

